

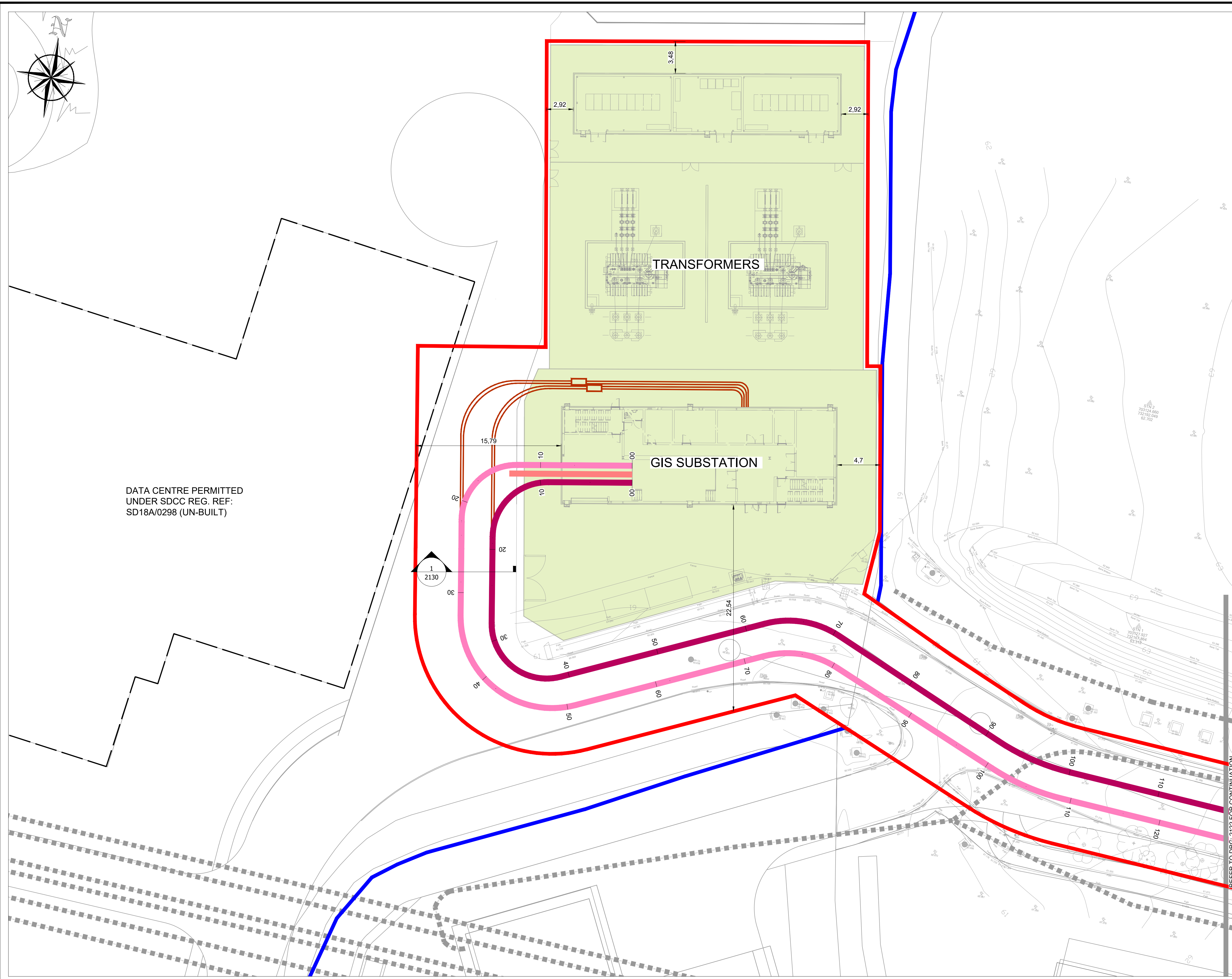
KEYPLAN

- LEGEND:**
- PLANNING BOUNDARY
 - PROPERTY BOUNDARY
 - PROPOSED 110KV GRANGE CASTLE TO COOLDERRIG No.1 CIRCUIT
 - PROPOSED 110KV GRANGE CASTLE TO COOLDERRIG No.2 CIRCUIT
 - PROPOSED FUTURE 110KV DUCTING
 - PROPOSED COMMS CABLES
 - - - EXISTING MV/LV UNDERGROUND CIRCUITS
 - - - EXISTING 110KV UNDERGROUND CIRCUITS
 - - - EXISTING PUBLIC LIGHTING LINES
 - EXISTING GRIFFEEN RIVER
 - EXISTING WAYLEAVE
 - COOLDERRIG SUBSTATION COMPOUND UNDER CONSTRUCTION AS PERMITTED UNDER SDCC REG. REF: SD18A/0298

NOTE:

- THE CABLE DUCTING DEPICTED IN THIS DRAWING IS TO OUR BEST KNOWLEDGE THE INTENDED ALIGNMENT ROUTE. ON INSTALLATION SOME MINOR ADJUSTMENTS MAY ARISE AS PREVIOUSLY UNIDENTIFIED UNDERGROUND SERVICES OR SIMILARLY UNFORESEEN OBSTRUCTIONS MAY ARISE. THE CURRENT ALIGNMENTS WILL BE ADJUSTED TO SUIT ACCORDINGLY.

DATA CENTRE PERMITTED UNDER SDCC REG. REF: SD18A/0298 (UN-BUILT)



P05	ISSUE FOR PLANNING	DW	BV	09.04.21
P04	FOR DISCUSSION	DW	BV	01.04.21
P03	FOR DISCUSSION	DW	RG	22.03.21
P02	FOR DISCUSSION	-	-	-
P01	FOR DISCUSSION	-	-	-

Clifton Scannell Emerson Associates
 Consulting Engineers, Seaford Lodge, Castledawson Avenue, Blackrock, Co. Dublin, Ireland, A94 P768
 T: +353 1 288 5006
 F: +353 1 283 3466
 E: info@csea.ie
 W: www.csea.ie

Client	BCEI		
Project	EDGECONNEX SUBSTATION 110KV CABLE ROUTE PROPOSED GRID CONNECTION CABLE ROUTE SHEET 1		
Dwg. Title	20_167		
Drawn By	DW	Date	DEC 2020
Checked By	RG	Scale	1:200 @ A1
Project Code	Originator	Zone/Phase	Level
20_167	CSE	GEN	ZZ
DR	C	2121	

S2	FOR INFORMATION
Status Code	Suitability Description
P05	PLANNING
Revision	Project Status

PLAN 1

REFER TO DRG. 2122 FOR CONTINUATION